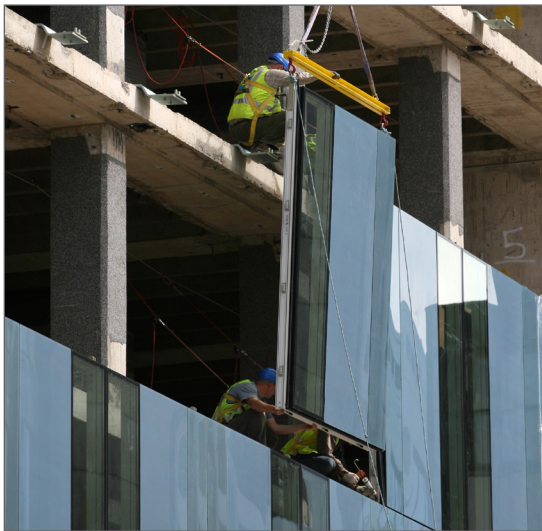


# OUR PRODUCTS SEAL TIGHT OUR SERVICE SETS US APART

Tremco understands that **glazing contractors** face demanding project schedules and margins, ever-changing building trends, and complex designs. We help you meet these challenges by providing superior technologies along with the personalized services that help you deliver on time and reduce call backs.



## WHEN YOU'RE ON THE JOB, WE'RE ON THE JOB

- Responsive and knowledgeable local representatives
- Experienced technical support team
- Jobsite visits including quality control assistance, trouble-shooting and documentation
- Consultative detail review with solutions tailored to the needs of your project
- Mock-up assistance

## PROVEN, TESTED AND GUARANTEED

Our recommendations are not just theoretical but proven by rigorous testing performed at our state-of-the-art Sustainable Building Solutions Test Facility. Contractors, architects and consultants are always welcome to visit our test facility to trial design concepts and assemblies.

- Compatibility and adhesion testing
- Proven performance for protective/impact glazing
- System Weatherseal Warranty capturing all extruded rubber and sealing materials

## CONNECTIVITY, TRANSITIONS AND INTERFACES

We offer the industry's largest range of solutions for connecting the window to the wall:

- High performance weather-barrier sealant with durable primerless adhesion\*
- Patented transition assemblies
- Product compatibility across the building envelope

\* Adhesion to be confirmed on project specific substrates.





## Spectrem® 1 – Ultra-low modulus silicone sealant with multiple applications

- Window and door perimeters, EIFS, dynamic joints
- Primerless bond to most substrates\*
- +/-50%



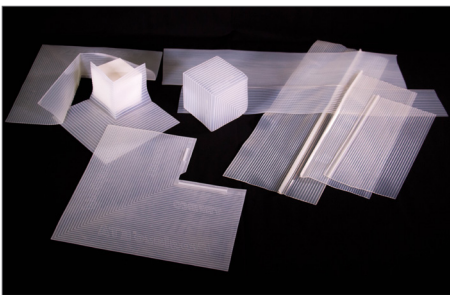
## Spectrem® 2 – Your everyday structural glazing sealant

- Window and door perimeters, cap beads and wet seals
- Structural glazing and internal seals
- Primerless bond to most substrates\*
- +/-50%



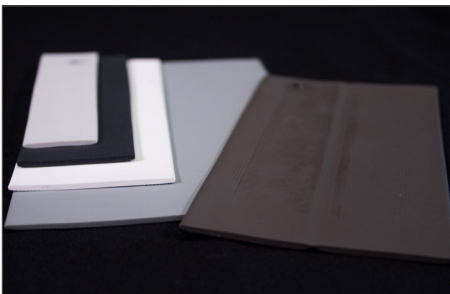
## Proglaze® SSG – Two- and four-sided structural and protective glazing

- Structural glazing
- Hurricane/Impact glazing
- +/-25%



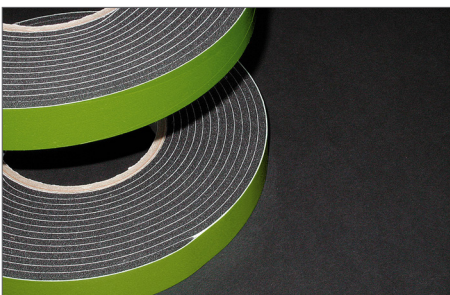
## Proglaze® ETA – Simplifies installation of transitions from window to wall

- Pre-engineered silicone materials for complex connections at the window-to-wall interface
- Transition assembly between the window or wall system and adjacent air and vapor barrier materials



## Spectrem® Simple Seal – Extruded silicone bridge for sealing joints and gaps

- Window perimeters; transition seals; EIFS, parapet wall, aluminum window, curtain wall, sheet metal roof and other lap joints
- Low to high movement conditions



## illmod® 600 – Pre-compressed impregnated foam seal for expansion joints

- Polyurethane joint sealant
- Expansion joints between tilt-up panels; joints in pre-cast concrete, masonry and brick façades, metal roofing panels, EIFS

*\*Adhesion testing is recommended on all substrates prior to installation*

